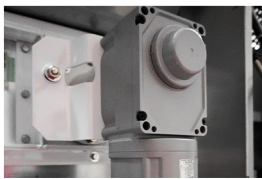


VUG SERIES TUMBLE DRYERS

55LB & 75LB

UNMATCHED WITHIN THE INDUSTRY, YAMAMOTO'S NEW VUG DRYER LINE DRIES LOADS **20% FASTER** WITH LESS GAS CONSUMPTION. **OPTIMIZED AIRFLOW, HEAT, AND LOAD DISTRIBUTION** INCREASES PERFORMANCE WITHOUT SACRIFICING YOUR UTILITY BILLS.

PAIRING INDUSTRY LEADING PERFORMANCE WITH NEARLY A CENTURY WORTH OF MANUFACTURING EXPERIENCE, YAMAMOTO'S DRYER LINE CHANGES THE WAY OPERATORS PERCEIVE QUALITY. **STANDARD WITH THE INDUSTRY'S BEST 5 YEAR ALL PARTS WARRANTY**, THERE IS NO BETTER SOLUTION TO UPGRADING YOUR LAUNDRY.



DIRECT DRIVE BELTLESS SYSTEM

- **LOWERS LIFETIME COSTS BY ELIMINATING BELTS & ROLLER REPLACEMENTS**
- **REVERSING ACTION SPEEDS UP DRYING AND PREVENTS TANGLING**
- **PERMANENTLY SEALED BEARING LASTS 2X LONGER**



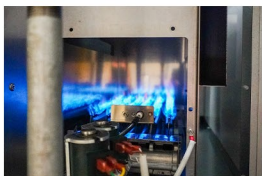
AXIAL AIRFLOW

- **SPEEDS UP DRY TIMES SAVING APPROX. 20% PER LOAD**
- **INCREASES EFFICIENCY AND REDUCES UTILITY USAGE**
- **UTILIZES A HIGHER PERCENTAGE OF INCOMING AIR FLOW**
- **DRIES MORE EVENLY WHICH EXTENDS LINEN LIFESPAN**



DUAL INVERTER DRIVE MOTORS

- **ENHANCES EFFICIENCY**
- **OPTIMIZES CONTROL OF THE DRIVE & BLOWER SYSTEMS**
- **REDUCES OVERALL EQUIPMENT COSTS**



ULTRA HEAT (6) BURNER SYSTEM

- **MAXIMUM 160370 BTU OUTPUT**
- **OVERSIZED FLAME GAUARD FOR ENHANCED SAFETY**
- **SIMPLE CONVERSION FROM N.G. TO L.P. GAS**



OVERSIZED BLOWER MOTOR

- **CENTRIFUGAL DESIGN MOVES UP TO 880 CFM**
- **ACHIEVES MAXIMUM ENERGY EFFICIENCY QUICKLY**
- **VIRTUALLY MAINTENANCE FREE**

Model No.		VUG550		VUG750	
Capacity (Best Practices)		25 kg	55 lbs	34 kg	75 lbs
Drum	Diameter	φ820 mm	φ32.3"	φ1110 mm	φ43.7"
	Depth	940 mm	37.0"	660 mm	26.0"
	L/Cubic Feet	496 L	17.5 cu. ft	639 L	22.5 cu. ft
Drum Speed		41 rpm		35 rpm	
Power	Electrical Phase, Voltage, Frequency	1 phase, AC200~240V, 50/60 Hz		1 phase, AC200~240V, 50/60 Hz	
	Full Load Current	9.5 A		14.1 A	
Minimum Supply-Circuit Conductor Ampacity		15 A		20 A	
Maximum Rating of Supply Circuit Overcurrent Protective Device		15 A		20 A	
Motor Size	Drum	0.5 HP (0.4 kW) 1/40		1.0 HP (0.75 kW) 1/40	
	Fan	0.5 HP (0.4 kW) 4P		1.0 HP (0.75 kW) 4P	
Dryer Gas	Supply Port	1/2 NPT		1/2 NPT	
	NATURAL GAS Pressure	5.0~10.5"WC (1.24~2.61 kPa)		5.0~10.5"WC (1.24~2.61 kPa)	
	L.P.GAS Pressure	10~13"WC (2.49~3.23 kPa)		10~13"WC (2.49~3.23 kPa)	
Gas Consumption		112600 Btu/h (33 kW)		160370 Btu/h (47 kW)	
Duct Diameter		φ200 mm	7.87"	φ200 mm	7.87"
Maximum Airflow		20 m ³ /min	706 cfm	25 m ³ /min	883 cfm
Maximum Static Pressure		2.73"WC (0.68 kPa, 68 mbar)		2.65"WC (0.66 kPa, 66 mbar)	
Minimum Airflow at The Final Outlet of The Duct		17 m ³ /min	600 cfm	21 m ³ /min	742 cfm
Maximum Pressure Loss for All Duct		0.52"WC (0.13 kPa, 13 mbar)		0.76"WC (0.19 kPa, 19 mbar)	
Machine Size	Height	1928 mm	75.9"	2120 mm	83.5"
	Width	876 mm	34.5"	1166 mm	45.9"
	Depth	1426 mm	56.1"	1236 mm	55.1"
Usage Environment	Temperature of Surrounding	5-45 °C	41-113°F	5-45 °C	41-113 °F
	Humidity	30-85 %		30-85 %	
	Altitude	Below 1000 m (3280')		Below 1000 m (3280')	
Weight Of Empty Machine		365 kg	805 lbs	480 kg	1058 lbs